



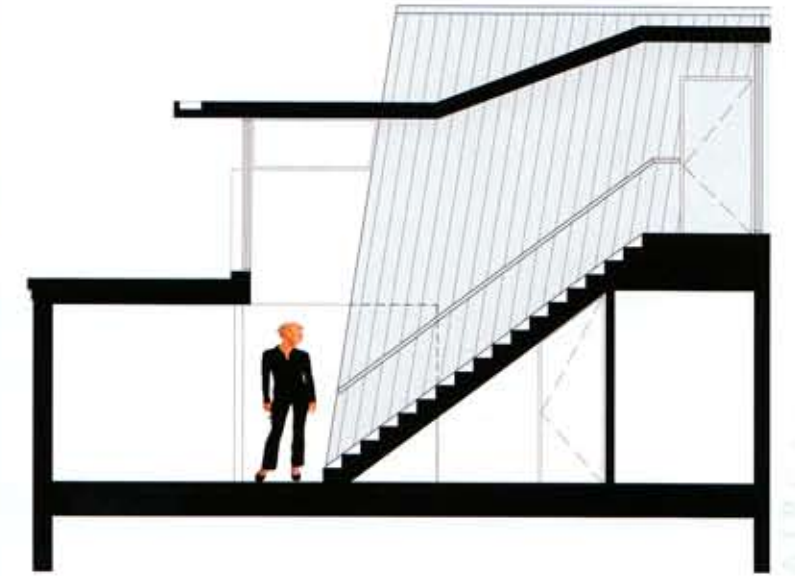
# Details for Living

Stephen Crafti

images  
Publishing



PHOTOGRAPHY: ERICA LAUTHIER



## 1930s apartment

*Bent Architecture*

The owners of this 1930s apartment desperately needed extra space. Their first-floor, 60-square-metre apartment had only one bedroom, a kitchen and bathroom and a small living area. "They weren't quite ready to move," says architect Paul Porjazoski.

To provide the extra space, a second level was added to the apartment by extending beyond the rooftop of the building. Using part of the existing hallway, the architects inserted a new staircase, which leads to a large living space and a small mixing studio (for music). The staircase features timber treads and plywood balustrades. Irregularly shaped openings are cut into the plywood.

"We wanted light to filter through the staircase and in the kitchen and living area," says Porjazoski, who also included two highlight windows at the top of the staircase to draw in the natural light.

The architects felt it was crucial to minimise the area of the staircase. "It's still a relatively small apartment. The only thing we had to remove was a built-in display unit from the original design," says Porjazoski, who saw the project as utilising basic 'infrastructure' to have dual functions. "The staircase is pragmatic (linking two levels) and also creates a lightwell," he adds.

STAIRCASES