

LIVING LITTLE

Simplicity and style in a small space





LIVING LITTLE

Simplicity and style in a small space



This award-winning house is a low-cost, compact family home set within a quiet inner suburb. The home's novel design is narrated through scale, materiality, and form, in both its overall expression and detailing. Thornbury House is a double-story residence in what

THORNBURY HOUSE

Melbourne, Victoria, Australia
1,894 ft² (176 m²)
Design: BENT Architecture
Photography: Tatjana Plitt

appears to be a single-story dwelling, being a creative response to a compact footprint within the context of typically larger Australian suburban dwellings. The roof was stretched and pulled to accommodate an upper level, resulting in a playful sculptural form that is both referential to and divergent from the pitched roofs typical of the area.

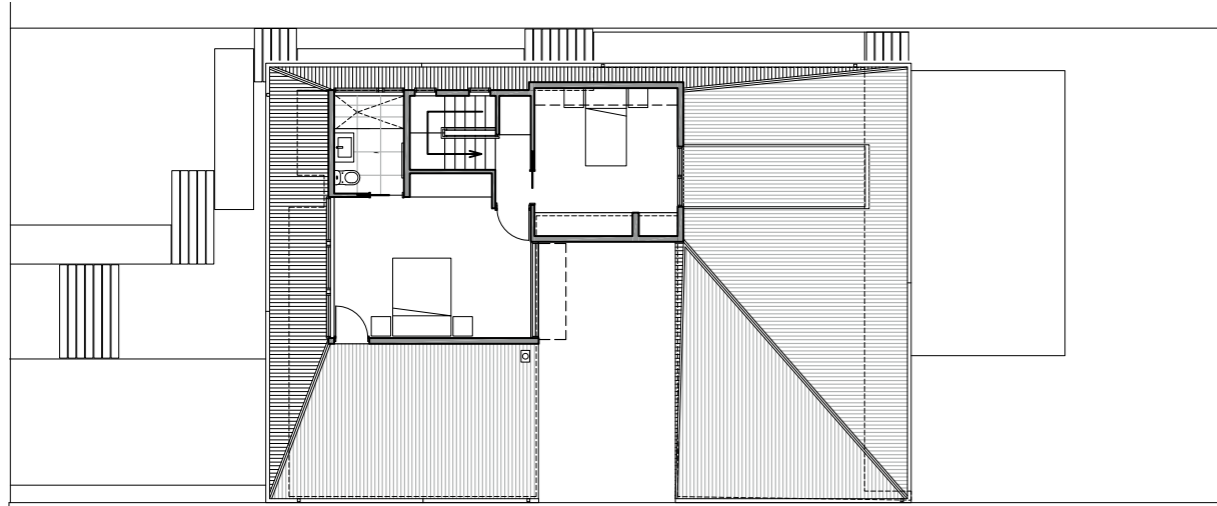
Utilizing traditional construction techniques and cost-effective building materials, a highly considered architectural project is delivered within tight budget constraints. A courtyard and the generous use of windows allow spaces to feel expansive despite their modest size.

Living spaces face north and feature large windows, as well as sliding doors that open to both the rear yard and courtyard. This saturates these prime areas with light and traces a fluid connection between the inside and the lively outdoors. The captivating external views proffered are integral to the internal experience of each space and build a strong relationship between internal and external spaces.

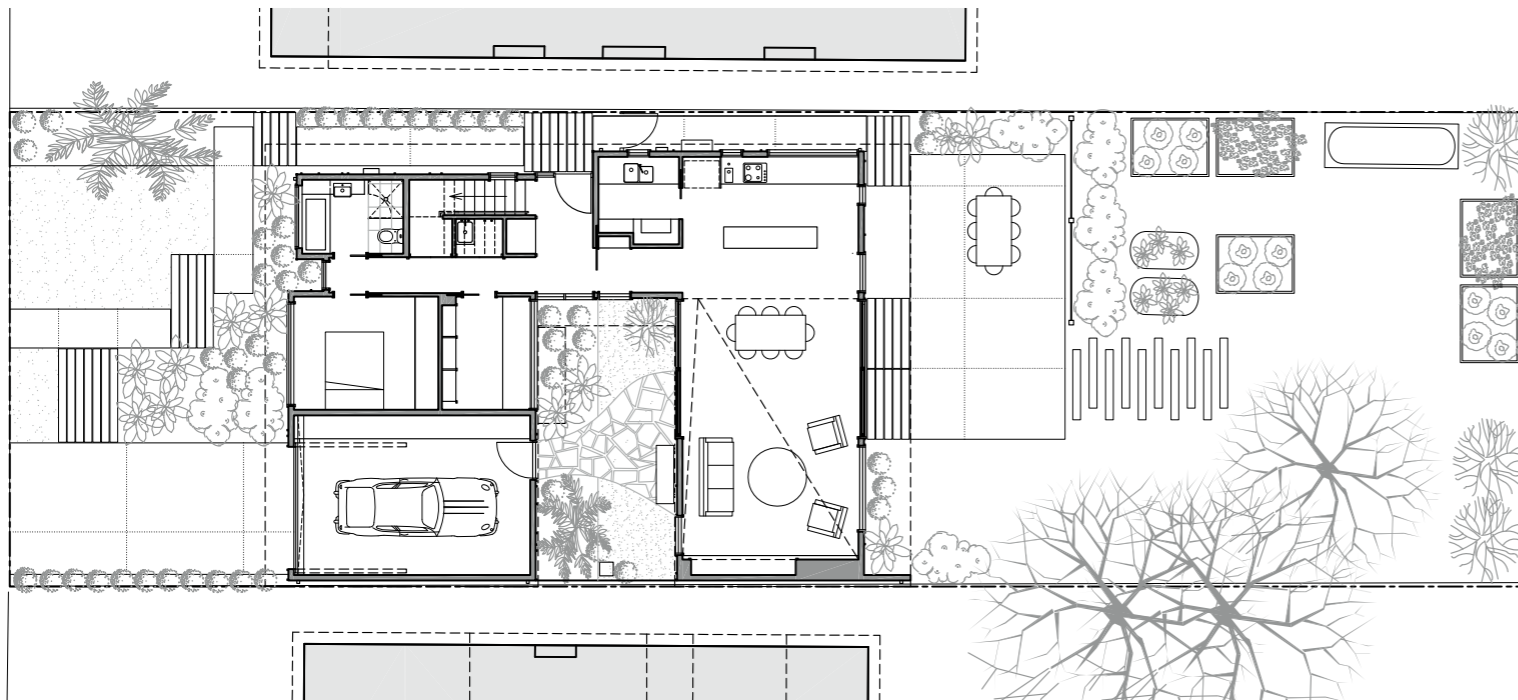
The living area's ceiling is articulated in double-height, courtesy of the pitched roof, creating an alternative volume and a liberating shift in the scale of the space. Details such as full-height hardwood architraves, polished concrete slabs and plywood joinery weave textural richness and tailor a warm interior that invites time spent together, making the Thornbury House a home where the heart truly is.

“A low-cost, compact design firmly embedded in scale, materiality, and form of context.”





Second-floor plan



First-floor plan

2 4 6 9.84ft
1 2 3m

